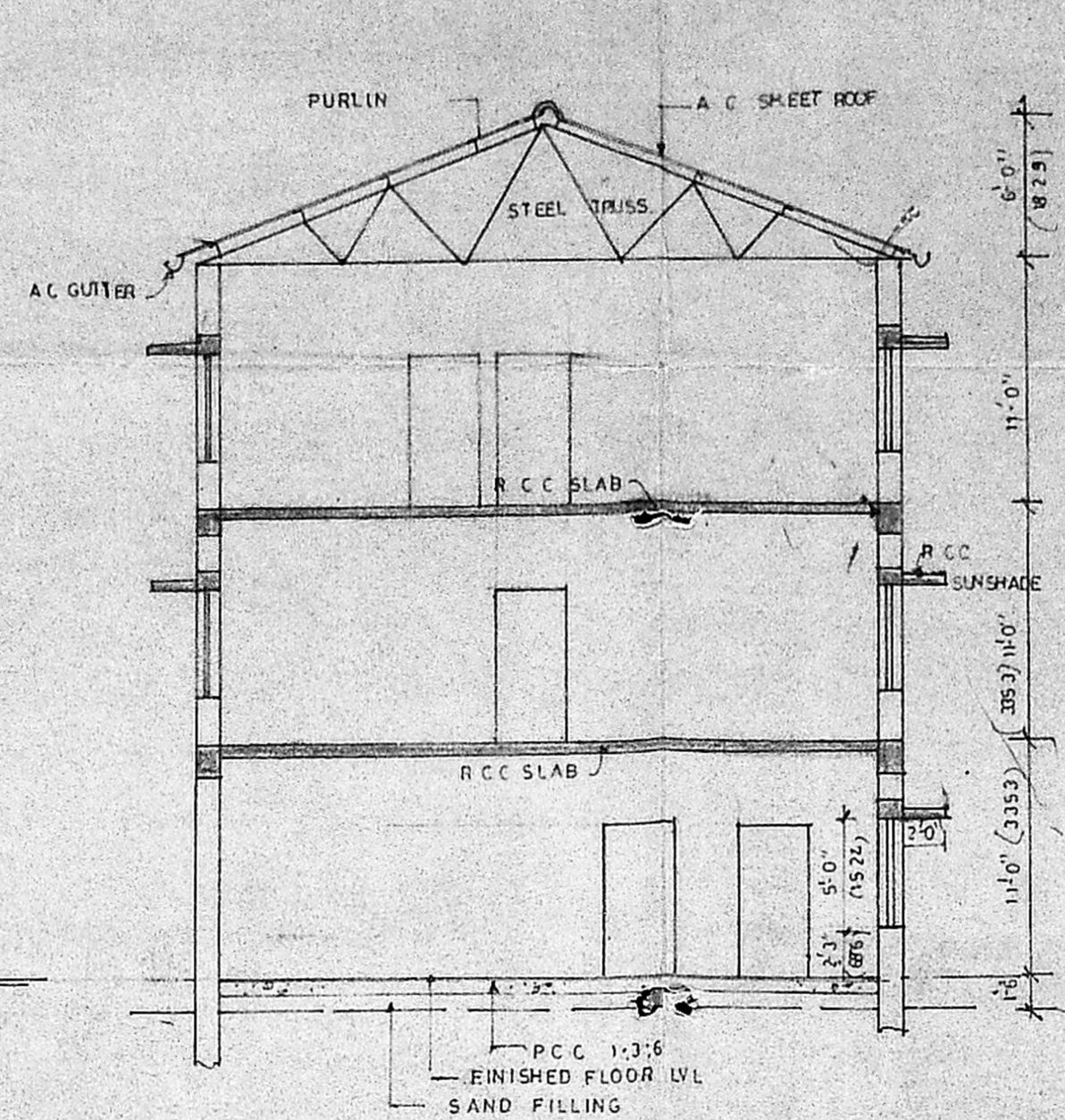
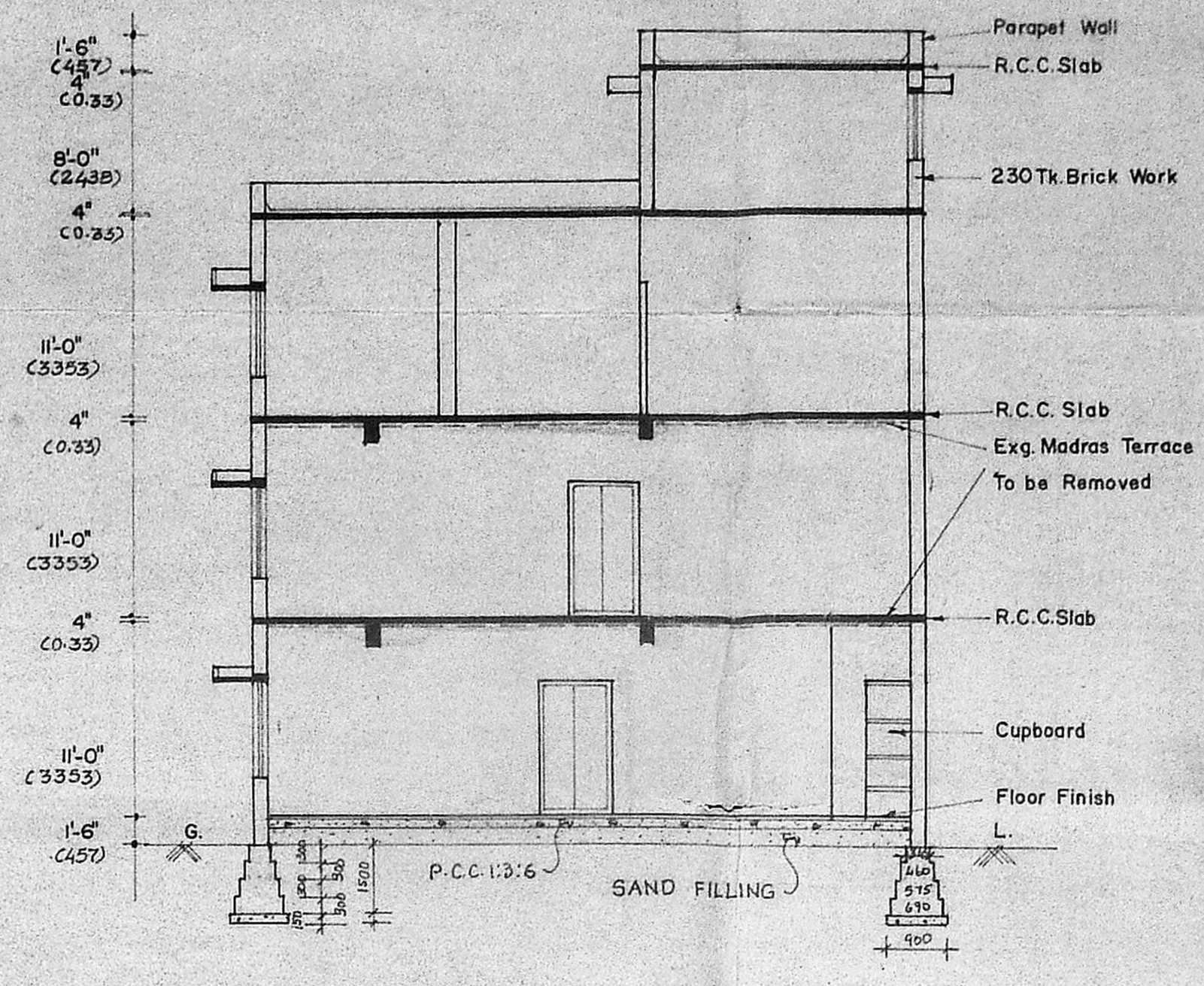


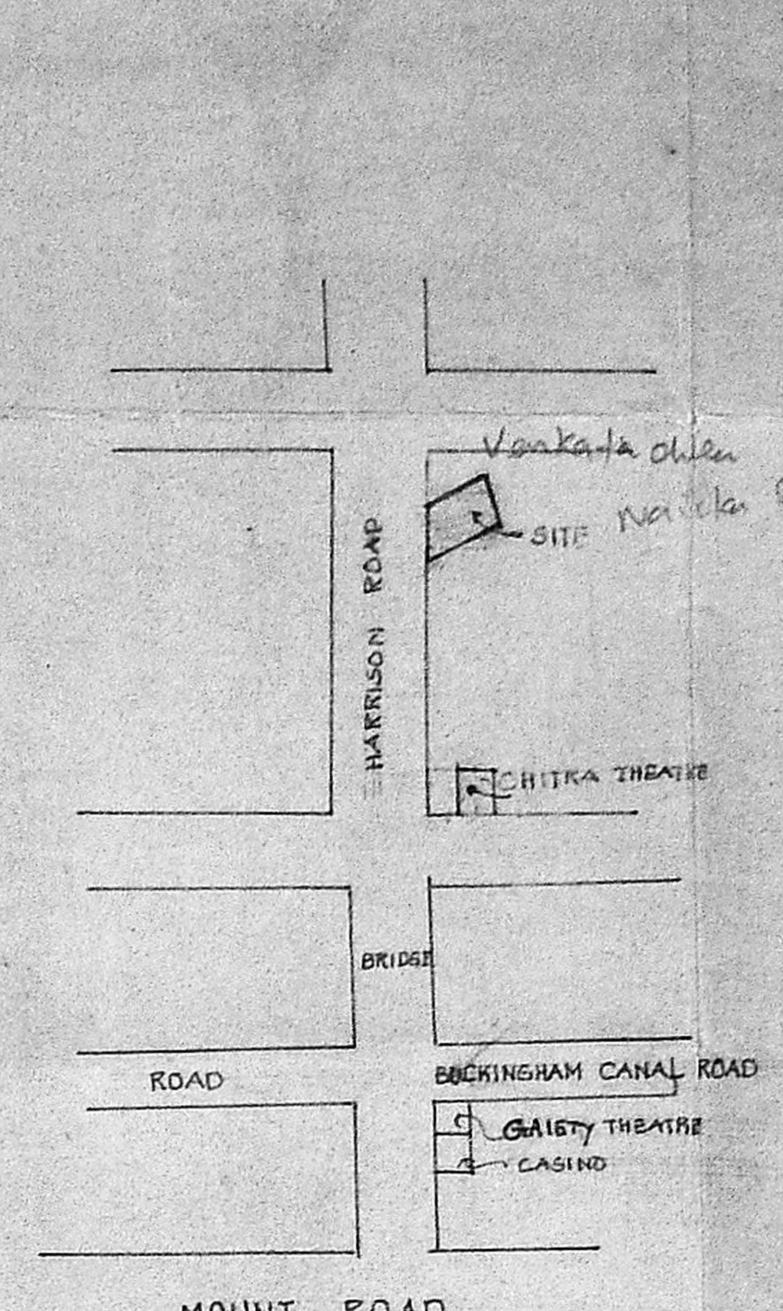
ELEVATION



SECTION ON -B-B-



SECTION ON 'A-A'



TOPO PLAN (NOT TO SCALE)

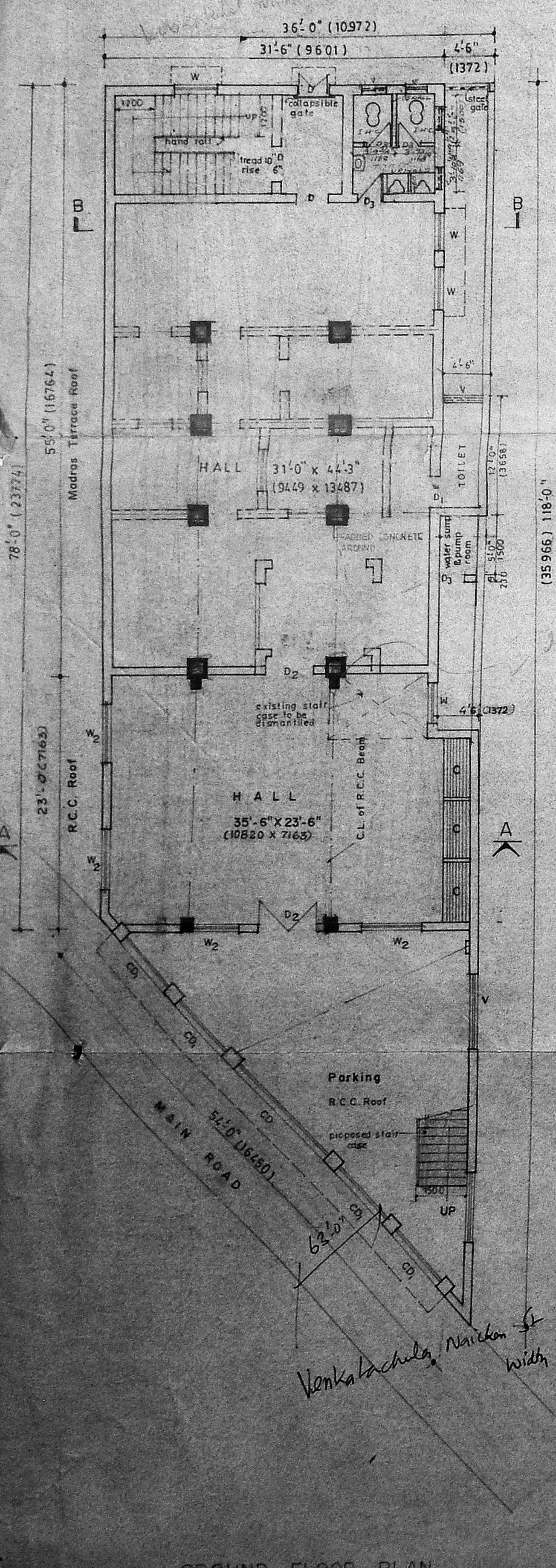
10349/320/90  
**APPROVED**  
 SUBJECT TO THE CONDITIONS IN THIS OFFICE LETTER.  
 No. 122/12210/90 Date: 7.9.90  
 S. D. S. S. S.  
 P. S. METROPOLITAN SECRETARY  
 MADRAS METROPOLITAN DEVELOPMENT AUTHORITY  
 MADRAS 600008

SCHEDULE OF JOINERIES

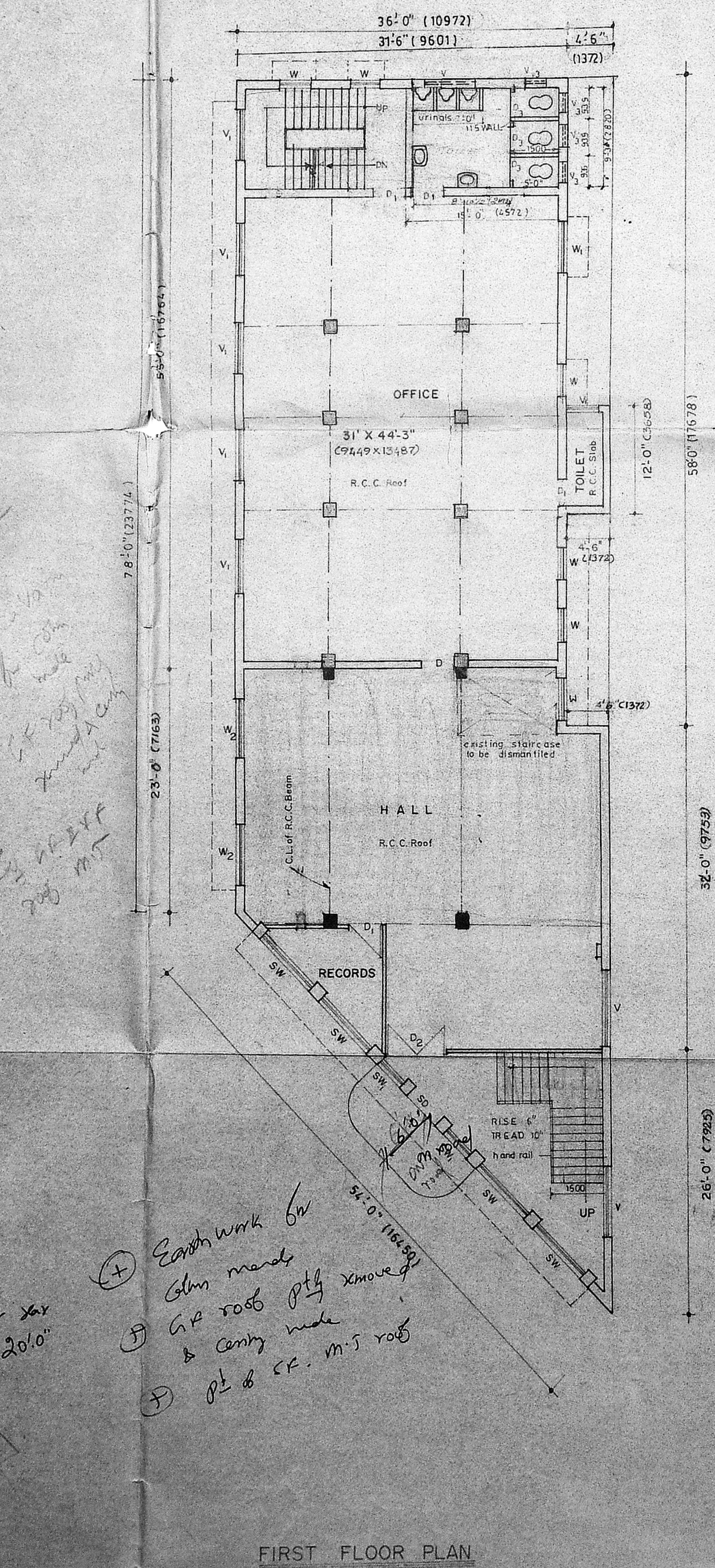
C.D.	Collapsible Door	12'-0" X 8'-10"	(3658 X 2692)
C.D.	-Do-	6'-9" X 8'-10"	(2057 X 2692)
D	T.W. Door	3'-3" X 7'-3"	(990 X 2210)
D <sub>1</sub>	-Do-	3'-0" X 7'-0"	(914 X 2134)
D <sub>2</sub>	-Do-	5'-0" X 7'-0"	(1524 X 2134)
D <sub>3</sub>	DO	3'-0" X 7'-0"	(914 X 2134)
W	T.W. Window	3'-0" X 5'-0"	(914 X 1524)
W <sub>1</sub>	-Do-	5'-0" X 5'-0"	(1524 X 1524)
W <sub>2</sub>	-Do-	6'-0" X 5'-0"	(1829 X 1524)
S.W	Steel Window	6'-9" X 5'-0"	(2057 X 1524)
S.W <sub>1</sub>	-Do-	3'-0" X 5'-0"	(914 X 1524)
S.D	Steel Door	3'-6" X 7'-3"	(1067 X 2210)
V	Steel Ventilator	5'-0" X 2'-0"	(1524 X 610)
V <sub>1</sub>	-Do-	3'-0" X 2'-0"	(914 X 610)
V <sub>2</sub>	DO	2'-6" X 2'-0"	(750 X 610)

SIMPSON & GROUP OF COMPANIES  
 R.S. NO 1053/2 OF EGMORE DIVISION  
 BLOCK NO. 43  
 PUDUPET, MADRAS.

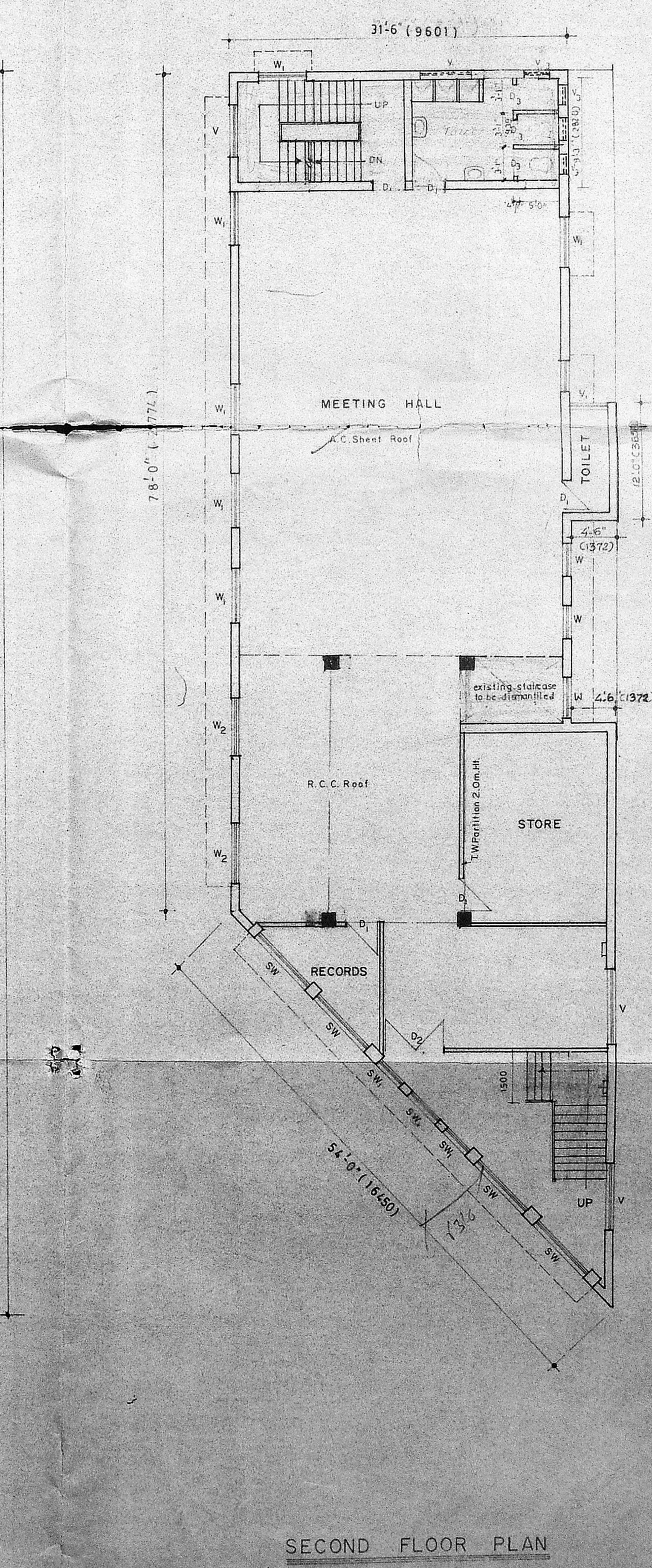
ALTERATION PLAN.



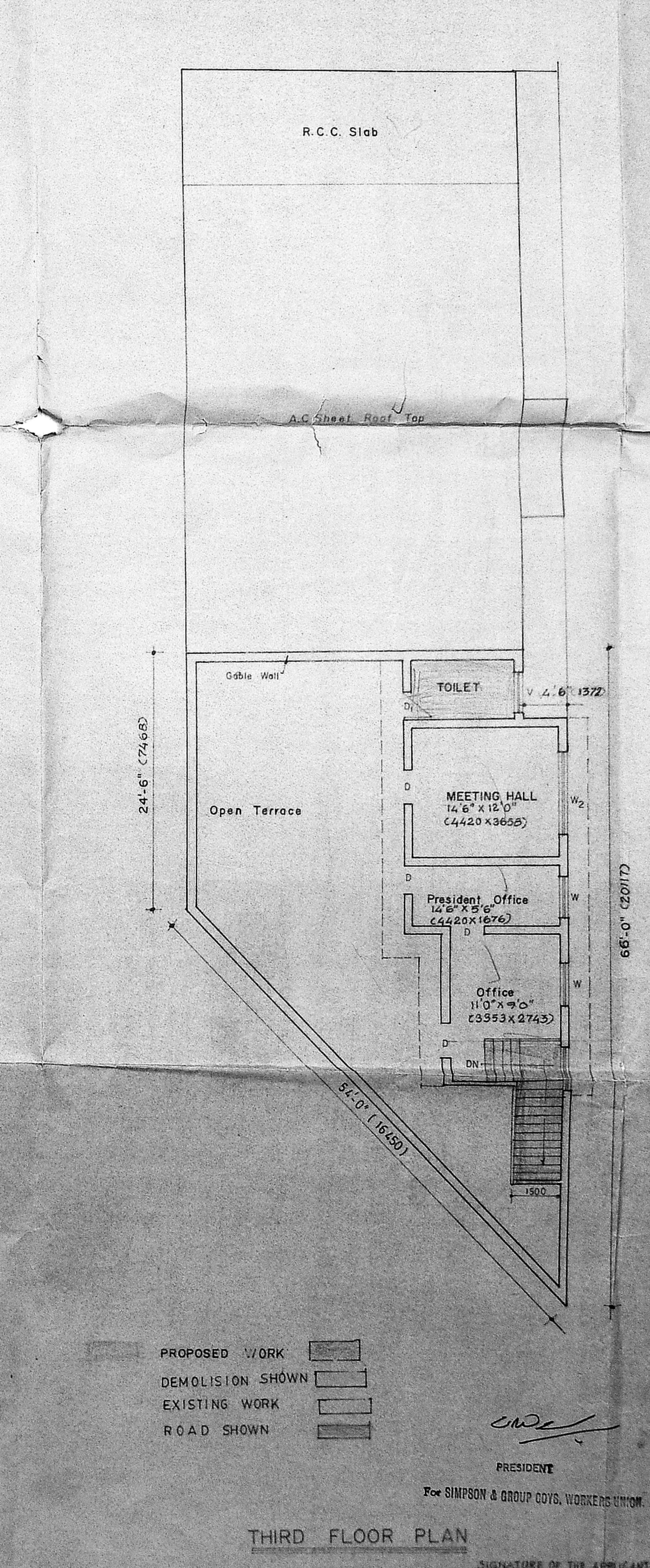
GROUND FLOOR PLAN



FIRST FLOOR PLAN



SECOND FLOOR PLAN



THIRD FLOOR PLAN

PROPOSED WORK  
 DEMOLITION SHOWN  
 EXISTING WORK  
 ROAD SHOWN

Handwritten notes:  
 + Earth work on  
 colonnade  
 - CR slab pty removed  
 & carry over  
 pt & of. m.s. roof

M/s C.R. NARAYANA RAO,  
 Architects & Engineers,  
 62/12-13/90  
 LUZ, MADRAS 600010  
 PART I  
 PART II  
 B. Tech. (1985) M.S. (III) Ph.D., D.P.  
 Assoc. M.A.M. Soc. C.E.F.I.E.F.I.V.  
 Registered Architect

DRAWN: M.M. SCALE: 1:100 DRG. No.  
 CHECKED: DATE: 22.03.90 MM/2239/90